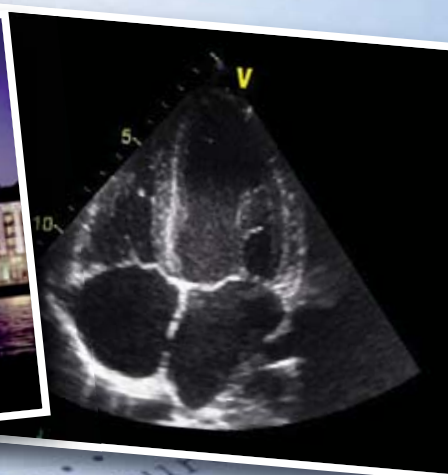


New for 2011

Hands on Training with the Heart Works Transthoracic Echocardiography Simulator, plus a session on Echo in the Intensive Care Unit



THE NEWCASTLE ECHO COURSE

The essential guide to adult transthoracic echocardiography

Tuesday 20th - Thursday 22nd September 2011

Millennium Copthorne Hotel, Newcastle upon Tyne

Clinical Organisers:

Dr Tim Irvine

Consultant Cardiologist, Royal Victoria Infirmary, Newcastle upon Tyne

Dr Antoinette Kenny

Consultant Cardiologist, Freeman Hospital, Newcastle upon Tyne

A comprehensive course reviewing core subject matter and introducing advanced concepts and techniques. The course is aimed at those familiar with basic principles of Echocardiography who wish to consolidate and build on their existing knowledge.




imagination at work

PHILIPS



HEARTWORKS
Animated Virtual Heart and Echocardiography simulator

A stethoscope is positioned at the top center of the page, resting on a document that contains various medical measurements and data. The background is a light blue gradient with a subtle pattern of medical terms and numbers.

A comprehensive course reviewing core subject matter and introducing advanced concepts and techniques. The course is aimed at those familiar with basic principles of Echocardiography who wish to consolidate and build on their existing knowledge.

Faculty

Chris Eggett	Senior Cardiac Physiologist, Freeman Hospital, Newcastle upon Tyne
Kate English	Consultant in Adult Congenital Heart Disease, Leeds General Infirmary
Richard Graham	Consultant Cardiologist, Friarage Hospital, Northallerton
Anna Johnson	Cardiac Physiologist, Freeman Hospital, Newcastle upon Tyne
Nav Masani	Consultant Cardiologist, University Hospital of Wales, Cardiff
David Northridge	Consultant Cardiologist, Western General Hospital, Edinburgh
Crispian Oates	Medical Physicist, Newcastle upon Tyne
Simon Ray	Consultant Cardiologist, Wythenshawe Hospital, Manchester

Course Directors

Tim Irvine	Consultant Cardiologist, Royal Victoria Infirmary, Newcastle upon Tyne
Antoinette Kenny	Consultant Cardiologist, Freeman Hospital, Newcastle upon Tyne

Programme

Day 1 Tuesday 20th September 2011

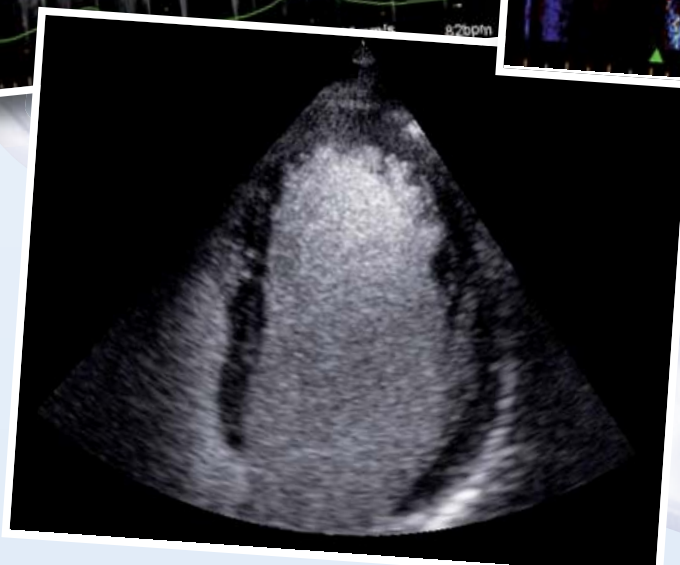
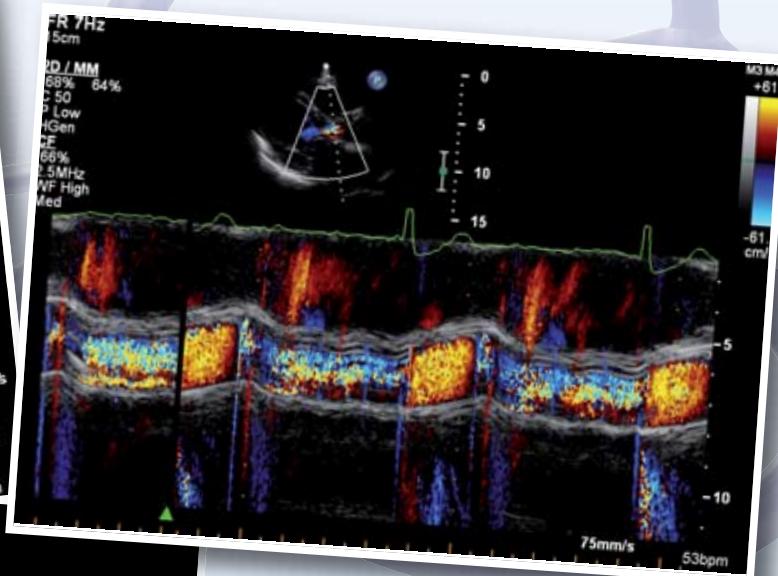
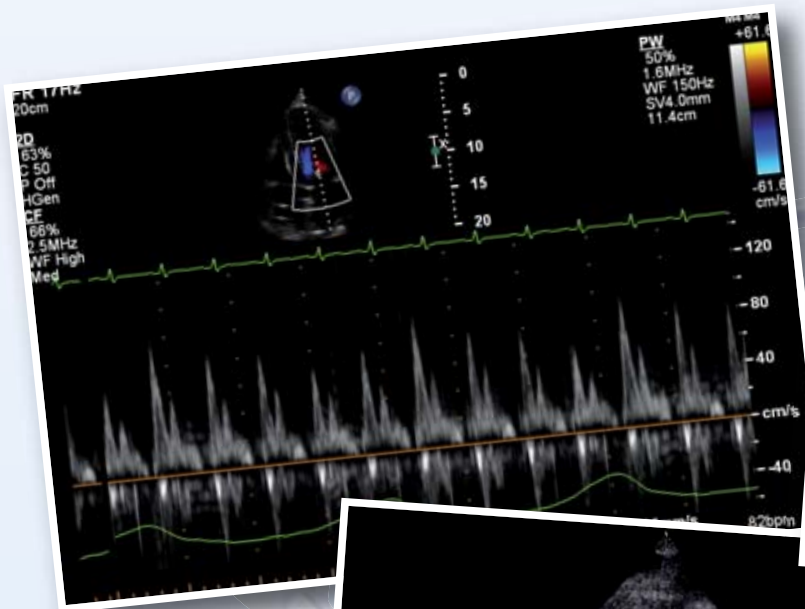
Time	Subject	Speaker
09:00	Introduction to the Course	Tim Irvine
09:15	Physics 1 - General Principles	Crispian Oates
10:30	Coffee	
11:00	Physics 2 - Imaging Modalities	Crispian Oates
12:00	Echo - Anatomical Correlation - featuring HeartWorks Virtual 3D Heart	Chris Eggett
12:30	Lunch	
13:30	Assessment of Systolic LV Function	Tim Irvine
14:45	Assessment of Diastolic LV Function	Richard Graham
15:15	Tea	
15:45	Echo Assessment of LV Dyssynchrony	Richard Graham
16:15	Cardiomyopathy	Tim Irvine
17:00	Close	

Day 2 Wednesday 21st September 2011

Time	Subject	Speaker
09:00	Echo and Stroke	Antoinette Kenny
09:45	Assessment of the Mitral Valve	David Northridge
10:45	Coffee	
11:15	Assessment of the Aortic Valve	Simon Ray
12:15	Endocarditis	David Northridge
12:45	Lunch	
13:45	Assessment of Prosthetic Valve Structure and Function (including TAVI)	Simon Ray
14:30	Group A HeartWorks Simulators	Group B Echo Cases - Workshop
15:45	Tea	
16:15	Group A Echo Cases - Workshop	Group B HeartWorks Simulators
17:30	Close	

Day 3 Thursday 22nd September 2011

Time	Subject	Speaker
09:00	Echo on the Intensive Care Unit	Anna Johnson
09:30	Echo Assessment of the Right Heart	Nav Masani
10:15	Coffee	
10:45	Disease of the Thoracic Aorta	Nav Masani
11:30	Pericardial Disease	Antoinette Kenny
12:15	Lunch	
13:15	Congenital Heart Disease - what the Adult Sonographer needs to know	Kate English
14:15	Group A HeartWorks Simulators	Group B Echo Cases - Workshop
15:30	Tea	
16:00	Group A Echo Cases - Workshop	Group B HeartWorks Simulators
17:15	Close	



GENERAL INFORMATION

VENUE

Millennium Cophthorne Hotel, Quayside, Newcastle upon Tyne NE1 3RT Tel: 0191 222 0333
Email:sales.newcastle@millenniumhotels.co.uk

The course will be held in the Cuthbert Suite.

Parking

The hotel has its own car park for which there is a small charge.

OVERNIGHT HOTEL ACCOMMODATION

All requests for accommodation should be made direct to the hotel as soon as possible, but before Friday 6 August, to obtain the special negotiated group rate. Bookings after this date will be subject to availability and at the best available rate. All requests for accommodation must be guaranteed with a credit card. The accommodation code, which must be quoted to obtain the reduced rate, is **MILL200911**. Bedrooms can be booked via telephone or email.

LOCATION AND TRANSPORT

Centrally located in the heart of the city on the banks of the River Tyne, with easy access to all road, train and airport links.

From North: approach Newcastle on A1 (M), taking slip road A695 City Centre. At roundabout, take 2nd exit and follow City Centre signs; at next roundabout take B1600 Quayside exit, hotel is on the right.

From South: approach Newcastle on A1 (M), pass Washington Services and follow A1 Gateshead signs. Take slip road A184 City Centre; A184 becomes A189. At end of Redheugh Bridge, take 1st left and follow B1600 Quayside signs, hotel is on the right.

Intercity Railway Station: 5 mins by car

Newcastle International Airport: 15 mins by car

CPD ACCREDITATION

CPD accreditation has been applied for as well as BSE accreditation. Please ensure you sign the attendance register.

ACKNOWLEDGEMENT

The Faculty and Organisers would like to thank GE Healthcare, Philips Healthcare, Edwards Lifesciences and Heartworks for their support towards this course.

BOOKING DETAILS

To register for this Course complete the attached registration form and return it, together with the registration fee, to Millbrook Medical Conferences. Registration fee payment may be made by Cheque or Debit/Credit Card.

The course fee for registrations received before Friday 5th August is £550.00 inc VAT. After this date, the registration fee will be £650.00 inc VAT.

The registration fee paid will be refunded less 25% (to cover the cost of administration) should delegates cancel their registration prior to Friday 2nd September. No refund will be made for cancellations after this date.

ORGANISATION

For further details of this Course contact:-

Millbrook Medical Conferences Limited, Suite 3, Elizabethan House, Leicester Road, Lutterworth,
Leicestershire LE17 4NJ telephone 01455 552559 fax: 01455 550098
e-mail info@millbrookconferences.co.uk

NEWCASTLE ECHOCARDIOGRAPHY COURSE

Tuesday 20th – Thursday 22nd September 2011: Millennium Copthorne Hotel, Newcastle upon Tyne

REGISTRATION FORM

Title (Prof/Dr/Mr/Mrs/Ms): FIRST NAME:

SURNAME

POSITION HELD

HOSPITAL

POSTAL ADDRESS

..... POSTCODE

TELEPHONE (inc STD):

FAX (inc STD):

EMAIL

SPECIAL DIETARY REQUIREMENTS

Places are limited. Book now to avoid disappointment

PAYMENT

The course fee for registrations received before Friday 5th August is £550.00 inc VAT .
After this date the registration fee will be £650.00 inc VAT.

Payment may be made by credit/debit card or cheque. Cheques should be made payable to 'Millbrook Medical Conferences Ltd'.

Payment Details:

CREDIT/DEBIT CARD: VISA/MASTERCARD/MAESTRO (please circle)

CARD NUMBER

ISSUE NUMBER: EXPIRY DATE:

SECURITY CODE: (last 3 digits on signature strip on back of card)

NAME ON CARD:

RETURN COMPLETED REGISTRATION FORM WITH PAYMENT TO:



MILLBROOK

MILLBROOK MEDICAL CONFERENCES LTD

Suite 3, Elizabethan House, Leicester Road, Lutterworth LE17 4NJ

Email: info@millbrookconferences.co.uk Tel: 01455 552559 Fax: 01455 550098